

## FEATURES

- The diaphragm pulse valves are especially designed for dust collector service applications, combining high flow, long life and extremely fast opening and closing to produce reliable and economical operation
- The high flow, angle type bodies, springless construction, in combination with the special diaphragm assemblies give the unique operating features required for dust collector service applications
- Integral compression fittings for fast, easy, secure installation
- Waterproof and explosionproof solenoids for use in potentially explosive atmospheres
- The valves satisfy all relevant EC directives

## GENERAL

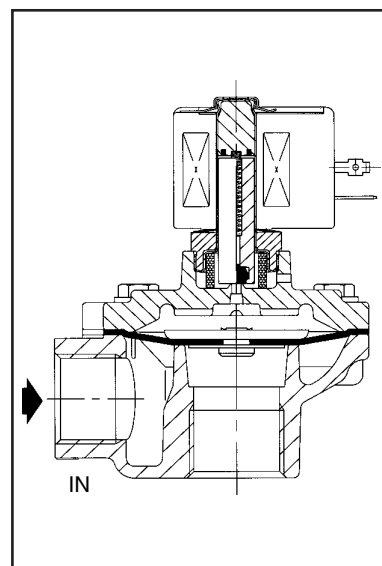
Differential pressure (PS) 0.35 - 8.5 bar [1 bar = 100kPa]  
Ambient temperature range -40 ~ +85°C

| Fluids (*) | Temperature Range (TS) | Diaphragm (*) |
|------------|------------------------|---------------|
| air        | -40°C ~ +85°C          | TPE (hytel)   |

## MATERIALS IN CONTACT WITH FLUID

(\*) Ensure that the compatibility of the fluids in contact with the materials is verified

|                         |                                |
|-------------------------|--------------------------------|
| Body                    | Aluminium                      |
| Core tube               | Stainless steel                |
| Core and plugnut        | Stainless steel                |
| Core spring             | Stainless steel                |
| Sealings & disc         | NBR                            |
| Diaphragm               | TPE                            |
| Shading coil            | Copper                         |
| Coil insulation class   | F                              |
| Connector               | Spade plug (cable Ø 6 - 10 mm) |
| Connector specification | ISO4400                        |
| Electrical safety       | IEC335                         |



## ELECTRICAL CHARACTERISTICS

Standard voltages DC (=): 24V  
(Other voltages and 60 Hz on request) AC (~): 24V/50; 110V/50, 120V/60; 220V/50, 240V/60

| Coil Type  | Nominal Power Ratings |           |     |            | Operator Temperature Range (TS) °C | Protection |
|------------|-----------------------|-----------|-----|------------|------------------------------------|------------|
|            | Inrush ~              | Holding ~ |     | Hot/Cold = |                                    |            |
|            | (VA)                  | (VA)      | (W) | (W)        |                                    |            |
| 238213-059 | 30                    | 16        | 8.1 | -          | -40 ~ +85°C                        | IP65       |
| 238313-903 | -                     | -         | -   | 21.2       |                                    |            |

## SPECIFICATIONS

| Pipe Size                               | Orifice Size | Flow Coefficient Kv |         | Operating Pressure Differential (bar) |           |     | Coil Type |       | Catalog Number |                 | Option |      |    |      |  |
|---|--------------|---------------------|---------|---------------------------------------|-----------|-----|-----------|-------|----------------|-----------------|--------|------|----|------|--|
|   |              |                     |         | Min.                                  | Max. (PS) |     |           |       |                |                 | FPM    | EPDM | CR | PTFE |  |
|   |              |                     |         |                                       | Air (*)   |     |           |       |                |                 |        |      |    |      |  |
|   | (mm)         | (m³/h)              | (l/min) |                                       | ~         | =   | ~         | =     | Aluminium      | Stainless Steel |        |      |    |      |  |
| G - Threaded pipe connection            |              |                     |         |                                       |           |     |           |       |                |                 |        |      |    |      |  |
| 3/4"                                    | 24           | 14                  | 233     | 0.35                                  | 8.5       | 8.5 | M6-FT     | M6-FB | SCG353G043*    | SCG353G132      | V      |      |    |      |  |
| 1"                                      | 27           | 17                  | 283     | 0.35                                  | 8.5       | 8.5 | M6-FT     | M6-FB | SCG353G044*    | SCG353G133      | V      |      |    |      |  |
| Ø - Compression fitting pipe connection |              |                     |         |                                       |           |     |           |       |                |                 |        |      |    |      |  |
| 3/4"                                    | 24           | 14                  | 233     | 0.35                                  | 8.5       | 8.5 | M6-FT     | M6-FB | SCG353G052*    | -               | V      |      |    |      |  |
| 1"                                      | 27           | 17                  | 283     | 0.35                                  | 8.5       | 8.5 | M6-FT     | M6-FB | SCG353G053*    | -               | V      |      |    |      |  |

\* Express in 10 business days, please contact with ASCO for more details.

### OPTIONS

- Waterproof enclosure with embedded screw terminal coil according to protection class IP67, CEE 10
- Explosionproof solenoids for hazardous locations according to ATEX and national standards
- Compliance with "UL" standards
- Plug with visual indication and/or peak voltage suppression
- Electronic timer
- Valves can also be supplied with FPM (fluoroelastomer) diaphragms and seals. Use the appropriate optional suffix letter for identification



### INSTALLATION

- The valves can be mounted in any position without affecting operation
- Threaded pipe connection is G (ISO 228/1) or compression fitting
- For compression fitting types tightness is achieved by the compressed gasket on the blow tube
- The use of the rubber gaskets as sealing members will allow a slight misalignment in piping when using compression fittings
- Other pipe threads are available on request
- Installation/maintenance instructions are included with each valve
- Spare parts kits and replacement coils are available

### DIMENSIONS (mm), WEIGHT (kg)

Threaded pipe connection

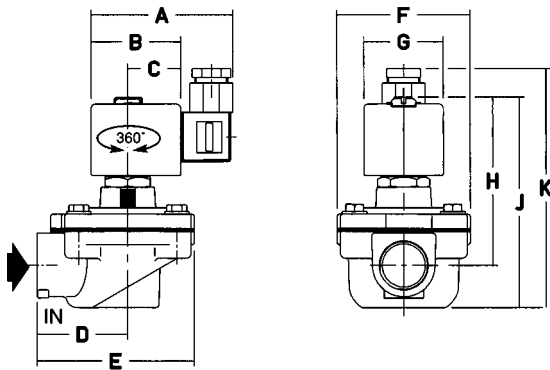


Fig. 1

Compression type fitting

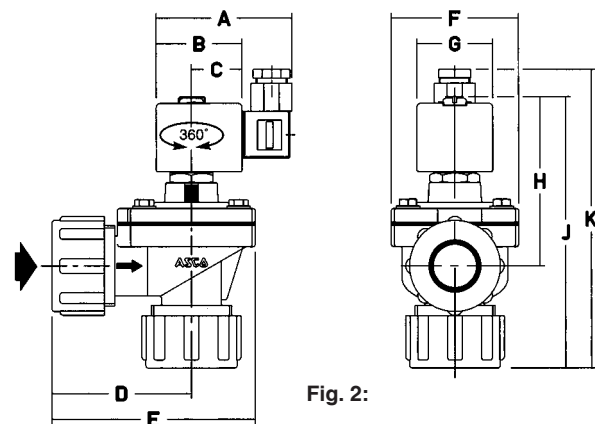


Fig. 2:

| Catalog Number | A  | B  | C  | D  | E   | F  | G  | H  | J   | K   | Weight <sup>(1)</sup> | (C)   |
|----------------|----|----|----|----|-----|----|----|----|-----|-----|-----------------------|-------|
| SCG353G043     | 87 | 52 | 27 | 51 | 89  | 75 | 43 | 92 | 113 | 130 | 0.70                  | Fig.1 |
| SCG353G044     | 87 | 52 | 30 | 81 | 89  | 75 | 43 | 93 | 113 | 127 | 0.65                  | Fig.1 |
| SCG353G052     | 87 | 52 | 27 | 88 | 125 | 75 | 43 | 92 | 175 | 195 | 0.85                  | Fig.2 |
| SCG353G053     | 87 | 52 | 30 | 88 | 125 | 75 | 43 | 93 | 175 | 192 | 0.90                  | Fig.2 |

<sup>(1)</sup> Incl. coil and connector

<sup>(C)</sup> Construction type